

ELLEN GALLAGHER WITH EDGAR CLEIJNE
CENTRO BOTIN
SELECCIÓN PRENSA/ PRESS SELECTION

PRINCIPAL 1 /PRIMARY 1

(Para breves con foto o secciones agenda/ for SMALL BLURBS)



EDGAR CLEIJNE Y ELLEN GALLAGHER

Highway Gothic, 2019

Instalación fílmica con película de 16 mm proyectada, y cianotipos impresos sobre película de 70 mm, paneles de textil y cajas de luz de resina

Dimensiones variables

© Edgar Cleijne y Ellen Gallagher

Cortesía de los artistas

EDGAR CLEIJNE AND ELLEN GALLAGHER

Highway Gothic, 2019

16 mm film installation with 70 mm film cyanotype banners, lightboxes, and cyanotype textile banners

Overall dimensions variable

© Edgar Cleijne and Ellen Gallagher

Courtesy the artists

PRINCIPAL 2 / PRIMARY 2

**(Imágenes acompañando a la anterior para textos más largos) / (if additional images
ALONG with above)**

Se adjuntan en el orden IDEAL de uso/ Shown in IDEAL order of use



2.1

EDGAR CLEIJNE Y ELLEN GALLAGHER
Highway Gothic (fotograma), 2019
© Edgar Cleijne y Ellen Gallagher
Cortesía de los artistas

EDGAR CLEIJNE AND ELLEN GALLAGHER
Highway Gothic (fotograma), 2019
© Edgar Cleijne and Ellen Gallagher
Courtesy the artists



2.2

EDGAR CLEIJNE Y ELLEN GALLAGHER
Highway Gothic (fotograma), 2019
© Edgar Cleijne y Ellen Gallagher
Cortesía de los artistas

EDGAR CLEIJNE AND ELLEN GALLAGHER
Highway Gothic (fotograma), 2019
© Edgar Cleijne and Ellen Gallagher
Courtesy the artists



2.3

EDGAR CLEIJNE Y ELLEN GALLAGHER

Highway Gothic (fotograma), 2019

© Edgar Cleijne y Ellen Gallagher

Cortesía de los artistas

EDGAR CLEIJNE AND ELLEN GALLAGHER

Highway Gothic (fotograma), 2019

© Edgar Cleijne and Ellen Gallagher

Courtesy the artists



2.4

EDGAR CLEIJNE Y ELLEN GALLAGHER

Osedax (diapositiva pintada a mano), 2010

© Edgar Cleijne y Ellen Gallagher

Cortesía de los artistas

EDGAR CLEIJNE AND ELLEN GALLAGHER

Osedax (hand-painted slide), 2010

© Edgar Cleijne and Ellen Gallagher

Courtesy the artists

SECUNDARIAS (ARTÍCULOS LARGOS) / SECONDARY (LONGER ARTICLES)

(*Estas fotos deben usarse cuando ya se hayan usado las primeras / These images should be used when primary ones have been already used)



EDGAR CLEIJNE Y ELLEN GALLAGHER

Osedax, 2010

Instalación fílmica con proyección cinematográfica de 16 mm, proyección de diapositivas pintadas a mano, paneles grabados e impresos

Dimensiones variables

© Edgar Cleijne y Ellen Gallagher

Cortesía de los artistas y Hauser & Wirth

EDGAR CLEIJNE AND ELLEN GALLAGHER

Osedax, 2010

Film installation with 16 mm film, hand painted slide projection, engraved panels and printed matter

Overall dimensions variable

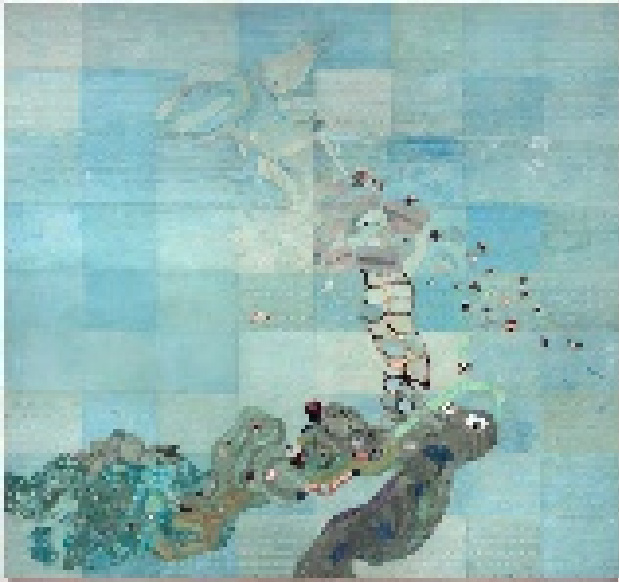
© Edgar Cleijne and Ellen Gallagher

Courtesy the artists and Hauser & Wirth



EDGAR CLEIJNE Y ELLEN GALLAGHER
Osedax (diapositiva pintada a mano), 2010
© Edgar Cleijne y Ellen Gallagher
Cortesía de los artistas y Hauser & Wirth

EDGAR CLEIJNE AND ELLEN GALLAGHER
Osedax (hand-painted slide), 2010
© Edgar Cleijne and Ellen Gallagher
Courtesy the artists and Hauser & Wirth



ELLEN GALLAGHER

Dew Breaker, 2015

Pigmento, tinta, óleo, grafito y papel sobre lienzo

188.2 x 202.9 cm

© Ellen Gallagher

Cortesía de la artista

Foto © Ernst Moritz

ELLEN GALLAGHER

Dew Breaker, 2015

Pigment, ink, oil, graphite and paper on canvas

188,2 x 202,9 cm

© Ellen Gallagher

Courtesy the artist

Photo © Ernst Moritz



ELLEN GALLAGHER

DeLuxe, 2004- 2005

Cuadrícula de 60 fotograbados, aguafuertes, aguatinta y punta seca con litografía, serigrafía, gofrado, grabado con máquina de tatuar; algunos con adiciones de plastilina, acuarela, pomada y ojos de juguete

33 x 26,5 cm c/u. Dimensión total: 215,26 cm x 447,04 cm

Varias colecciones

© Ellen Gallagher

Cortesía de la artista y Hauser & Wirth

Foto: ©2013 Alex Delfanne

ELLEN GALLAGHER

DeLuxe, 2004-2005

Grid of 60 photogravure, etching, aquatint and drypoints with lithography, screenprint, embossing, tattoo-machine engraving; some with additions of plasticine, watercolor, pomade and toy eyeballs.

Each: 38,9 x 32,5 cm; overall dimensions: 214,9 x 452,7 cm

Various collections

© Ellen Gallagher

Courtesy the artist and Hauser & Wirth

Photo: ©2013 Alex Delfanne



ELLEN GALLAGHER

Psychoalphadiscobetabioaquadoloop, 2002

Goma, papel y esmalte sobre lino

244 x 305 cm

© Ellen Gallagher

Cortesía de la artista

ELLEN GALLAGHER

Psychoalphadiscobetabioaquadoloop, 2002

Rubber, paper and enamel on linen

243,8 x 304,8 cm

© Ellen Gallagher

Courtesy the artist